

# DO YOU KNOW?



- **Where to get information about St. Charles County Services?**
- **How to obtain help through local Public Service Agencies?**
- **What is available through the State of Missouri?**
- **Who you can call for resources to help you?**

**IF NOT, YOU DO NOW.....**



# DO YOU KNOW?



- **Where to get information about St. Charles County Services?**
- **How to obtain help through local Public Service Agencies?**
- **What is available through the State of Missouri?**
- **Who you can call for resources to help you?**

**IF NOT, YOU DO NOW.....**



# DO YOU KNOW?



- **Where to get information about St. Charles County Services?**
- **How to obtain help through local Public Service Agencies?**
- **What is available through the State of Missouri?**
- **Who you can call for resources to help you?**

**IF NOT, YOU DO NOW.....**



# KNOW AND SHARE THESE VALUABLE RESOURCES...



## Community Connection

[www.communityconnection.org](http://www.communityconnection.org)  
University of Missouri Extension (573) 882-7477



## Community Council of St. Charles County

[www.communitycouncilstc.org](http://www.communitycouncilstc.org)  
(636) 936-8023

**State Of Missouri**  
[www.missouri.gov](http://www.missouri.gov)  
State operators (573) 751-2000

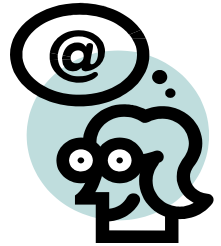
## St. Charles County Library District

[www.win.org/library](http://www.win.org/library)  
Spencer Road Branch (636) 447-2320  
Computers are available for public use at most locations

**Westplex Information Network**  
[www.win.org](http://www.win.org)  
Win help desk (636) 477-1796

Offered by VISION St. Charles class of 2006 [www.visionleadership.org](http://www.visionleadership.org)

# KNOW AND SHARE THESE VALUABLE RESOURCES...



## Community Connection

[www.communityconnection.org](http://www.communityconnection.org)  
University of Missouri Extension (573) 882-7477



## Community Council of St. Charles County

[www.communitycouncilstc.org](http://www.communitycouncilstc.org)  
(636) 936-8023

**State Of Missouri**  
[www.missouri.gov](http://www.missouri.gov)  
State operators (573) 751-2000

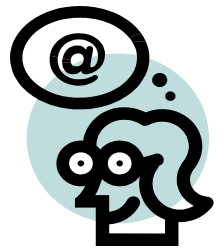
## St. Charles County Library District

[www.win.org/library](http://www.win.org/library)  
Spencer Road Branch (636) 447-2320  
Computers are available for public use at most locations

**Westplex Information Network**  
[www.win.org](http://www.win.org)  
Win help desk (636) 477-1796

Offered by VISION St. Charles class of 2006 [www.visionleadership.org](http://www.visionleadership.org)

# KNOW AND SHARE THESE VALUABLE RESOURCES...



## Community Connection

[www.communityconnection.org](http://www.communityconnection.org)  
University of Missouri Extension (573) 882-7477



## Community Council of St. Charles County

[www.communitycouncilstc.org](http://www.communitycouncilstc.org)  
(636) 936-8023

**State Of Missouri**  
[www.missouri.gov](http://www.missouri.gov)  
State operators (573) 751-2000

## St. Charles County Library District

[www.win.org/library](http://www.win.org/library)  
Spencer Road Branch (636) 447-2320  
Computers are available for public use at most locations

**Westplex Information Network**  
[www.win.org](http://www.win.org)  
Win help desk (636) 477-1796

Offered by VISION St. Charles class of 2006 [www.visionleadership.org](http://www.visionleadership.org)